

Certificate Issued To:  
**Mountain Rose Herbs**  
12661 Hoover St  
Garden Grove, CA 92841  
USA



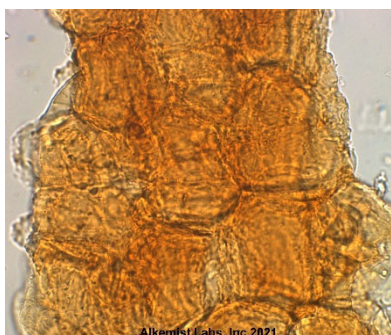
Work performed at:  
**Alkemist Labs**  
12661 Hoover Street  
Garden Grove, CA 92841  
714-754-HERB (4372)  
sales@alkemist.com

**Certificate of Analysis: Comfrey Root (25639)**  
Microscopy with Digital Photo-Documentation

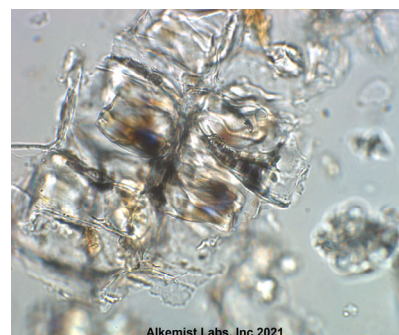
1



2



3



Company Name: Mountain Rose Herbs  
Title: Comfrey Root  
Plant Part: Root  
Sample Received: 4/28/2021  
Sample Description: Clear Reclosable Plastic Bag  
Form of Botanical: cut and sifted  
Appearance: (1) Brown and tan cut and sifted root pieces  
Lot : 25639  
Sample : 21118EWE\_1  
Latin Name: Symphytum officinale L. [Boraginaceae]  
Reference Sample : UC1499AHP2 Symphytum officinale L. [Boraginaceae] authenticated by macroscopic, microscopic &/or TLC studies according to the reference sources cited below; held at Alkemist Labs, Garden Grove, CA.  
Analyst: E. Sudberg & I. Solorzano  
Magnification: (2) 400X  
Chemical Reagents: (2) acidified chloral hydrate glycerol solution  
Sample Findings: (2) brown cork  
Magnification: (3) 400X  
Chemical Reagents: (3) acidified chloral hydrate glycerol solution  
Sample Findings: (3) parenchyma cells showing condensed mucilage  
Reference Source: Herbal Drugs and Phytopharmaceuticals, Max Wichtl, 3rd ed., 2004; Microscopic Characterization of Botanical Medicines, Upton, R., 2011  
MIC-SOP-54-04, MIC-SOP-54-05, MIC-SOP-54-06, MIC-SOP-510-07

**Comments & Conclusions:** This sample has characteristics of *Symphytum officinale* L. [Boraginaceae] root based on comparison with an authenticated reference sample and the characteristics described in the references cited above. The characteristic cellular structures identified in this sample are the brown cork seen in micrograph (2) above. In micrograph (3) we see the parenchyma cells showing condensed mucilage.  
**This test sample, Comfrey Root (25639), has characteristics of *Symphytum officinale* L. [Boraginaceae] root.**  
*NOTE: The presence of soluble excipients and other plant species material was not detected in this test sample.*

Analyzed by: Iris Solorzano  
Examined, Reviewed & Authorized by: Élan M Sudberg, CEO

Report Date: 5/3/2021



This report applies to the sample investigated and is not necessarily indicative of the quality or condition of apparently identical or similar products. This report is for the exclusive use of the party who requested the report and not for public dissemination or use by third parties, including for promotional purposes, without the prior written permission of Alkemist Labs, Inc. This report provides technical results for a specific sample and the report shall not be altered, modified, supplemented or abstracted in any manner. Any violation of these conditions renders the report and its results void. © 2021 Alkemist Labs, Inc. All Rights Reserved.