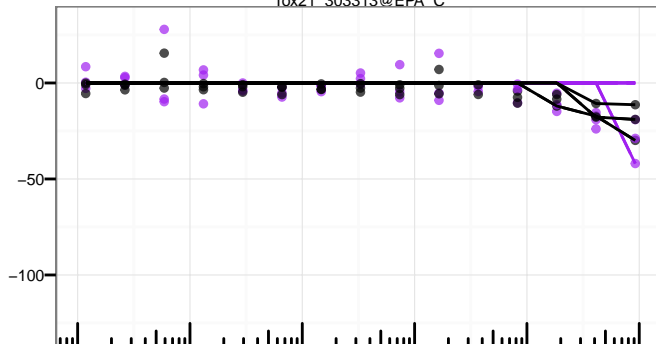


2-Ethylhexyl diphenyl phosphate

1241-94-7

Purity:A|A

Tox21_303313@EPA_C

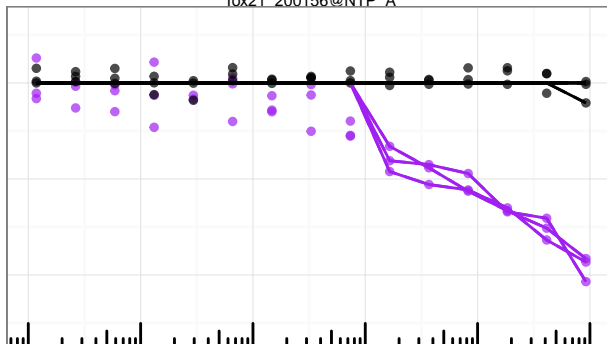


2,2',4,4',5-Pentabromodiphenyl ether

60348-60-9

Purity:A|ND

Tox21_200156@NTP_A

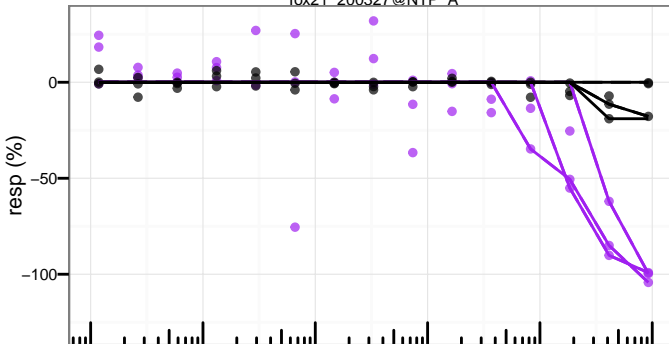


2,2',4,4'-Tetrabromodiphenyl ether

5436-43-1

Purity:A|ND

Tox21_200327@NTP_A

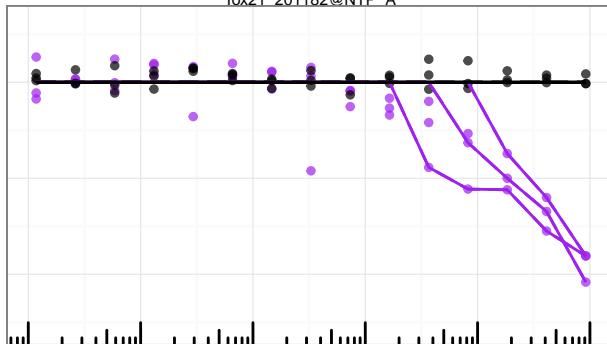


3,3',5,5'-Tetrabromobisphenol A

79-94-7

Purity:A|A

Tox21_201182@NTP_A

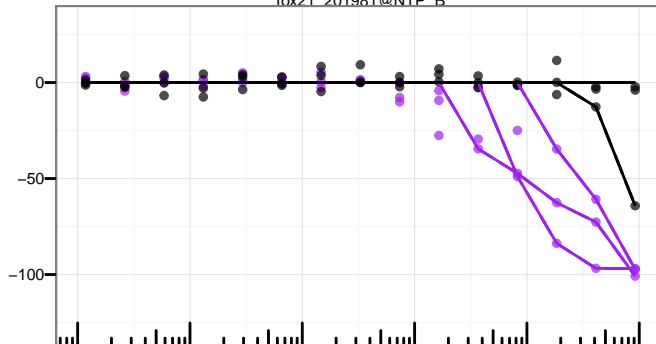


3,3',5,5'-Tetrabromobisphenol A

79-94-7

Purity:A|A

Tox21_201981@NTP_B

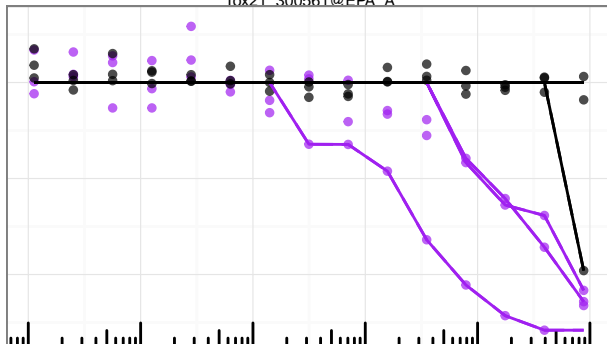


3,3',5,5'-Tetrabromobisphenol A

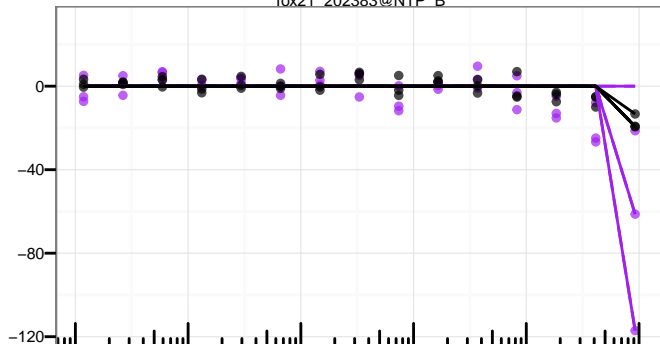
79-94-7

Purity:A|A

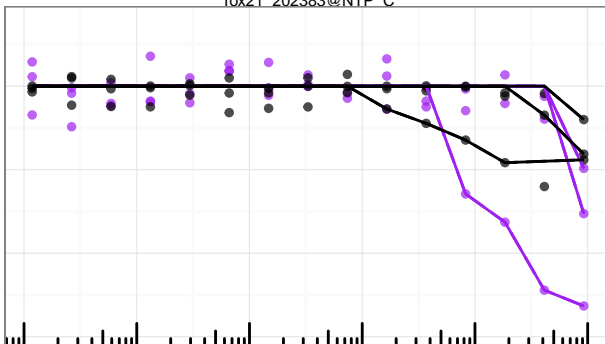
Tox21_300561@EPA_A



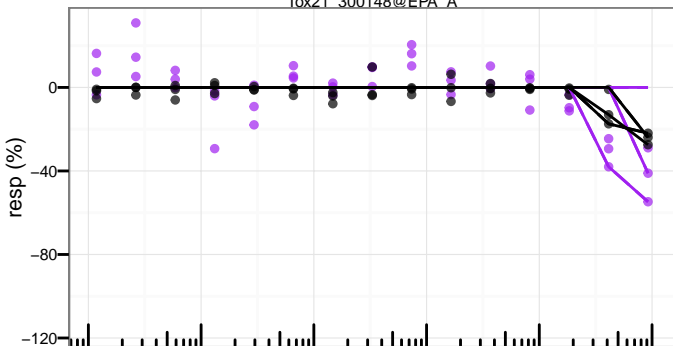
Chlorpyrifos
2921-88-2
Purity:A|C
Tox21_202383@NTP_B



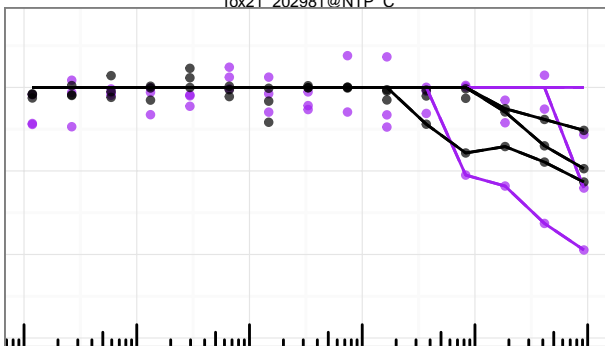
Chlorpyrifos
2921-88-2
Purity:A|C
Tox21_202383@NTP_C



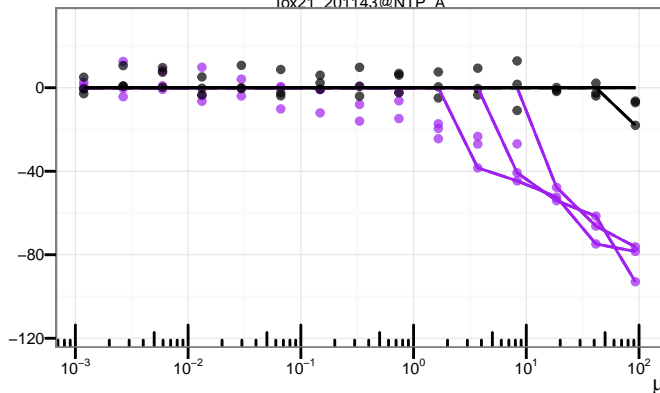
Chlorpyrifos
2921-88-2
Purity:B|C
Tox21_300148@EPA_A



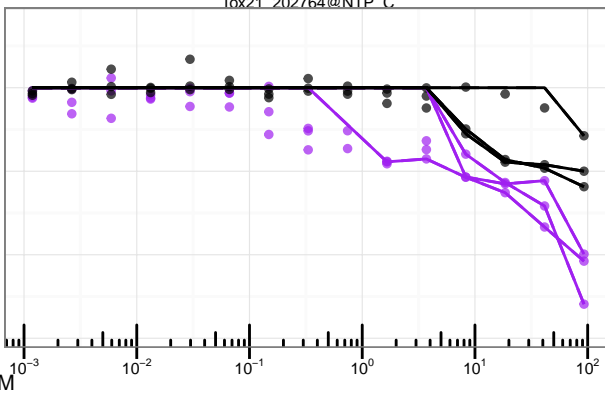
Isodecyl diphenyl phosphate
29761-21-5
Purity:ND|ND
Tox21_202981@NTP_C



Pentabromodiphenyl ether
32534-81-9
Purity:D|ND
Tox21_201143@NTP_A



Phenol, isopropylated, phosphate (3:1)
68937-41-7
Purity:M|JM
Tox21_202764@NTP_C

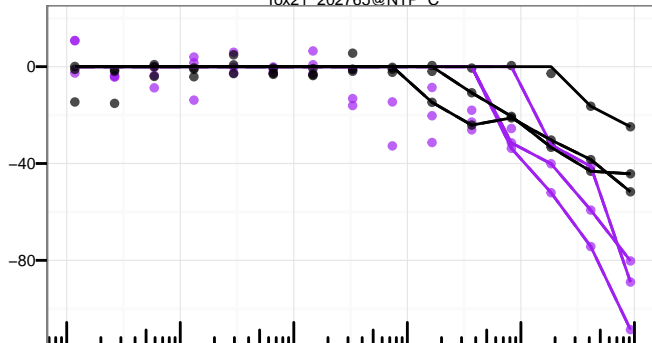


Phenol, isopropylated, phosphate (3:1)

68937-41-7

Purity:MM

Tox21_202765@NTP_C

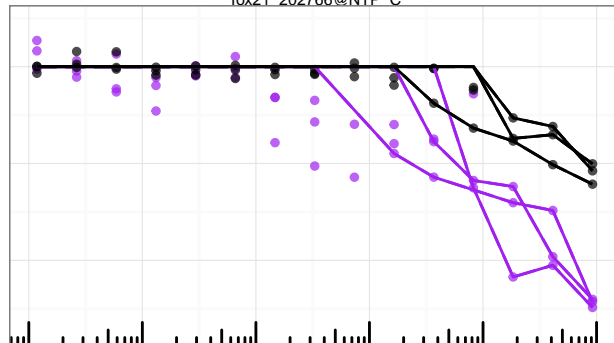


Phenol, isopropylated, phosphate (3:1)

68937-41-7

Purity:MM

Tox21_202766@NTP_C

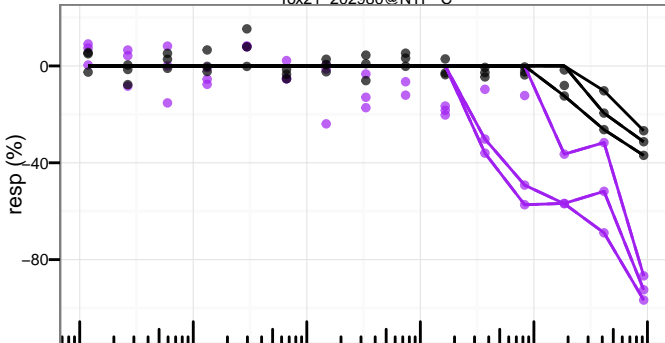


tert-Butylphenyl diphenyl phosphate

56803-37-3

Purity:C/C

Tox21_202980@NTP_C

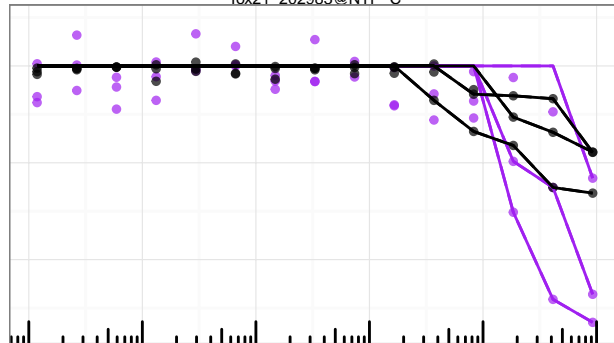


Tri-o-cresyl phosphate

78-30-8

Purity:A/A

Tox21_202983@NTP_C

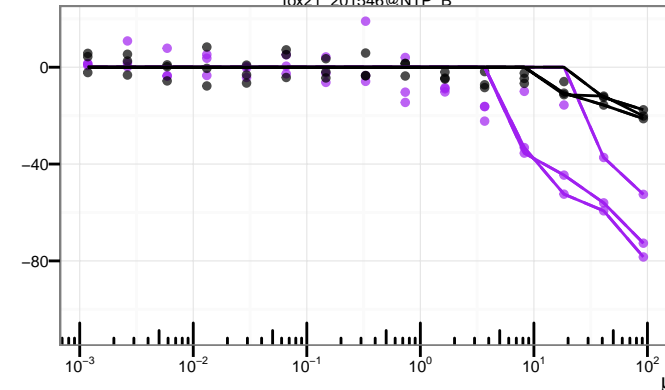


Tricresyl phosphate

1330-78-5

Purity:A/A

Tox21_201546@NTP_B

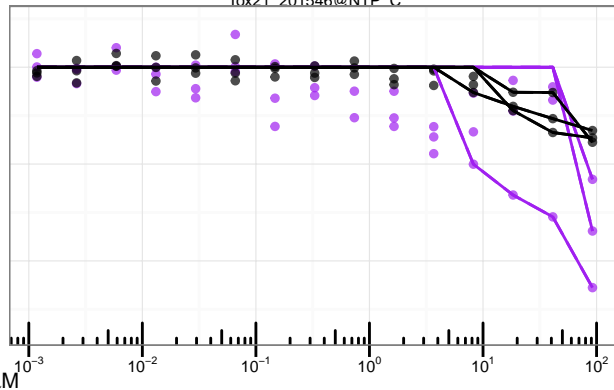


Tricresyl phosphate

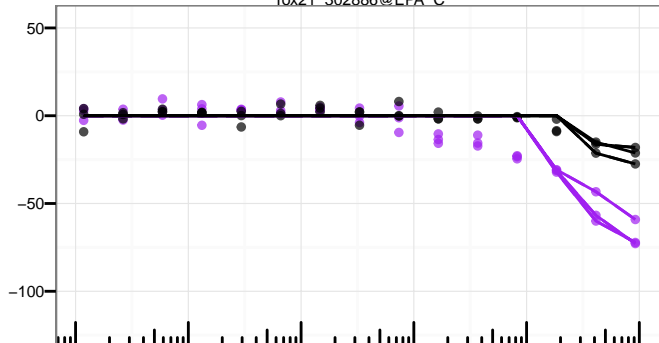
1330-78-5

Purity:A/A

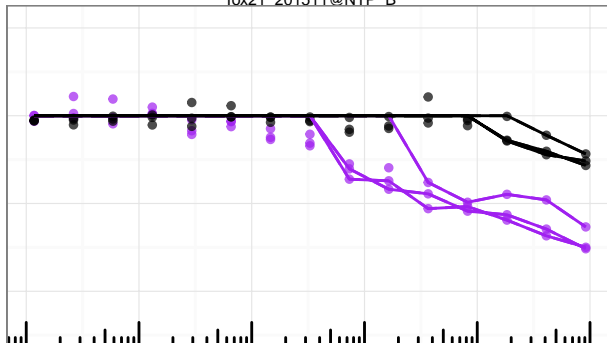
Tox21_201546@NTP_C



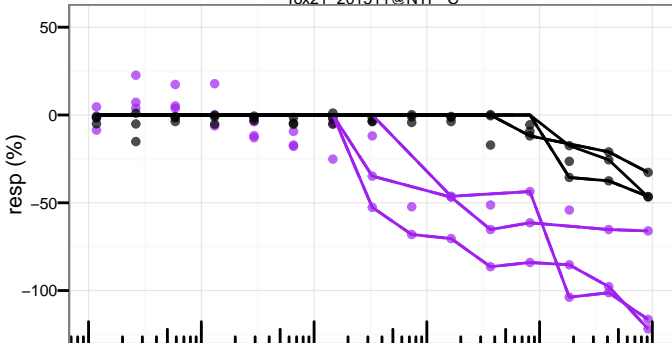
Tricresyl phosphate
1330-78-5
Purity:A|A
Tox21_302886@EPA_C



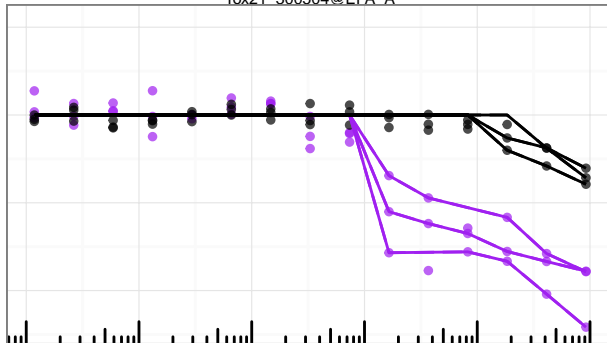
Triphenyl phosphate
115-86-6
Purity:A|A
Tox21_201511@NTP_B



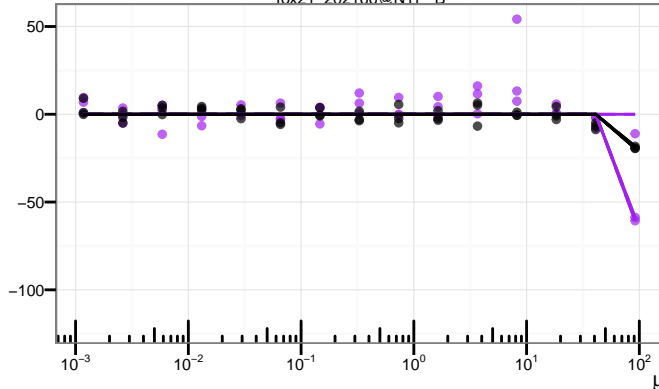
Triphenyl phosphate
115-86-6
Purity:A|A
Tox21_201511@NTP_C



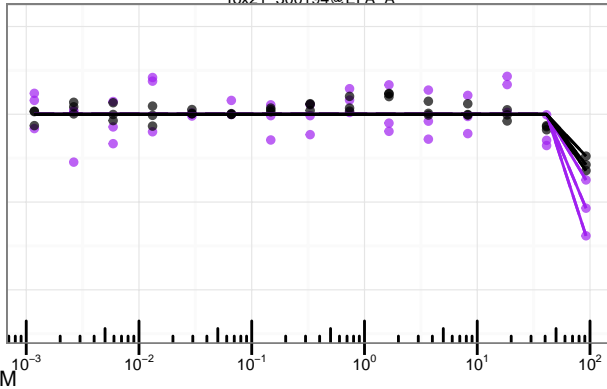
Triphenyl phosphate
115-86-6
Purity:A|A
Tox21_300504@EPA_A



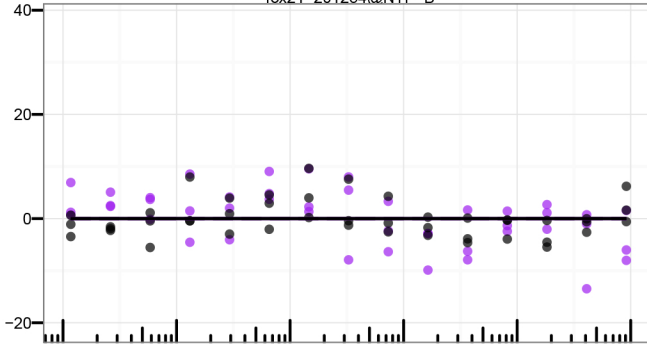
Tris(1,3-dichloro-2-propyl)phosphate
13674-87-8
Purity:A|A
Tox21_202166@NTP_B



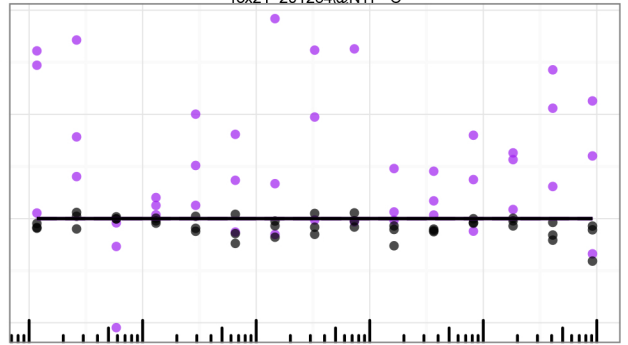
Tris(1,3-dichloro-2-propyl)phosphate
13674-87-8
Purity:A|A
Tox21_300194@EPA_A



Tris(2-chloroethyl) phosphate
115-96-8
Purity:AJA
Tox21_201254@NTP_B



Tris(2-chloroethyl) phosphate
115-96-8
Purity:AJA
Tox21_201254@NTP_C



Tris(2-chloroethyl) phosphate
115-96-8
Purity:FcJFc
Tox21_300074@EPA_A

